

ZEUS POWDER CENTRE

Super colour centre

Optional

- Ultrasonic sieve
- Teleservice
- Internal Wi-fi
- Powder loader by tank and cardboard
- JSC Plus large chamber



maxi version
with box added

ZEUS

ELECTROSTATIC SYSTEM

coating your world

www.zeus-el.it



Easy colour centre

Optional

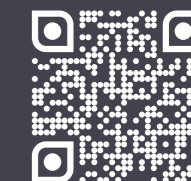
- Electromechanical vibrating sieve diameter 600 mm
- Easy Plus version large chamber



POWDER CENTRE

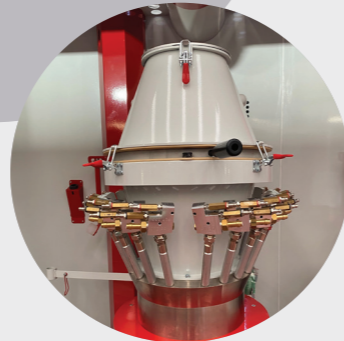
ZEUS ELECTROSTATIC SYSTEM S.R.L.
Tel. +39 0532 800 335 | zeus@zeus-el.it

Find out more
about ZEUS



SUPER COLOUR CENTRE

- Max 22 installable venturi pumps
- Supply voltage 220V 50HZ
- Air supply 6 BAR
- Venturi pump cleaning system integrated in the tank
- Cardboard virgin powder loader via high-flow dense phase pump
- Tank fully inspectable to guarantee safe colour change
- Painted steel structure
- Suction connected to the final filter with pneumatically controlled partializing valve
- Virgin powder level control by weighing scale
- Powder level inside the container controlled by weighing
- Loading system cleaning
- Ethernet port inside the panel command
- Interface with central plc
- Powder consumption tables in excel format
- Kg of consumed powder transferable via ethernet port
- Transfer 4.0 Ready



OPTIONAL

- Ultrasonic sieve for virgin and recycled pre-sieving
- Additional box connected to the filter suction
- Powder loader for large batches directly from container of fluidized accumulation

POWDER CHARGER

The virgin powder is weighed before being loaded and transferred to the mini tank using a dense phase system that draws directly from the paint box. Load cells are placed below the vibrating plane to control the weight of the remaining powder. If a high powder feed is required, the cardboard suction device may be replaced by a fluidized hopper.



INTEGRATED RACK in the powder centre Remote control from tablet or external terminal

FEATURES
integrated teleservice module
reciprocator control, control of reading, communication and gun control systems, connection with powder centre, Super colour series, Zeus3 control booth, gun activation control, piece absence/presence function, encoder on the drive unit, job statistics.



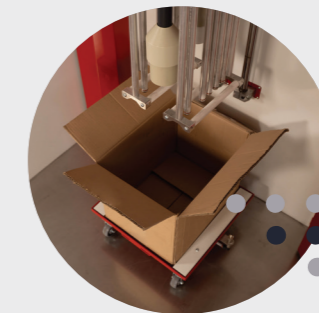
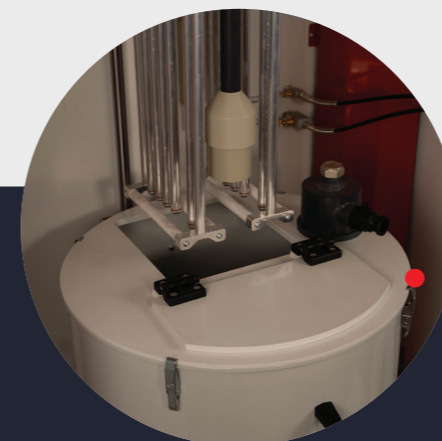
EASY COLOUR CENTRE

Easy colour centre and Easy colour centre+

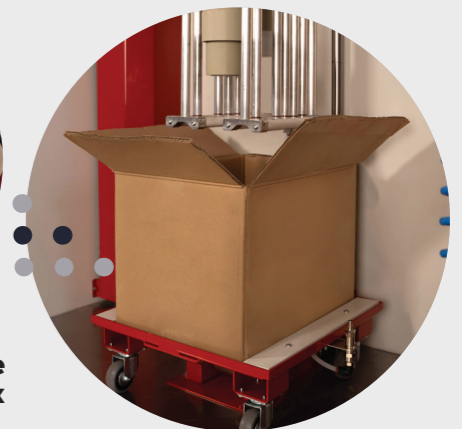
- Max no. of installable Venturi pumps max 12
- Supply voltage 220V 50HZ
- Inlet pressure 6 BAR
- Mobile vibrating plane
- Painted steel structure
- Plastic walls
- Connection to the final filter suction
- Cleaning gun
- Level probe for powder level control in cardboard
- Emergency button
- Main switch
- Pneumatic cylinder driven pump carrier plate
- Pneumatic supply 6 BAR
- Control panel IP 54



FLUIDIZED CONTAINER Capacity: 1 carton of powder



Vibrating plane for powder box



If installed in a system without J control modules, there is a by-pass system that performs a pneumatic injection through the venturi pump to allow better cleaning of the venturi pump